



## Care & Independence

Bathing Model:.....

Serial Number: .....

User Name: .....

*The bathing model and serial number  
are located on the label on the frame.*

Care & Independence Ltd is a UK manufacturer registered with MHRA as a Class 1 Medical Device Manufacturer and this is a Class 1 medical device as defined in the Medical Device Regulation 2017/745.

Our devices are designed and manufactured to meet or exceed BS EN 10535:2021 for the transfer of disabled persons and are designed and manufactured by Care & Independence, a certified ISO9001:2015 organisation.

### Declaration

Care & Independence Ltd, declares under its sole responsibility that the aforementioned products to which this declaration relates, and which bear the CE marking, are in conformity with the applicable requirements of EU regulation 2017/745 as transposed in the laws of the Member States.

### Intended Purpose

The device is intended for use by a care giver as a mobility aid for less-abled persons when assisted-bathing needs are required.

THIS USER GUIDE IS APPLICABLE  
FOR THE FOLLOWING  
**BATHING PRODUCTS ONLY:**

981-B: Tilt-In-Space Chair - Bariatric

Please ensure that both the product and any associated accessories have been adjusted by a competent person prior to its initial use.

ISSUE DATE: 30/04/24  
VERSION: UG/BR-TISBAR-EN01  
STATUS: APPROVED  
AUTHORISED BY: Technical Director

  
.....  
J. ASH

## 1. GENERAL



### WARRANTY:

The BATHING RANGE products covered in this User Guide have been awarded a FIFTEEN YEAR WARRANTY on frame and TWO YEAR on components. Any manufacturing defect will be rectified free of charge. Product damage through wear and tear, neglect or accidental damage is not covered by the warranty.

## 2. BATHING PRODUCT SAFETY



### 2.1 GENERAL:

- 2.1.1. Only competent persons should ever use bathing equipment.
- 2.1.2 A risk assessment must be completed before using the product.
- 2.1.3 It is essential that the equipment is fit for purpose; the correct size and type of product for an individual is essential to ensure the safety and comfort of the user.
- 2.1.4 Product care and inspection instructions should be followed at all times.
- 2.1.5. **No bathing equipment must ever be used for more than its rated load** (see label).
- 2.1.6 We advise that vulnerable users are not left unattended when using this equipment.
- 2.1.6 **If there is any doubt about equipment safety, remove the equipment from use until checked and authorised for use by a competent person.**
- 2.1.7 For all associated bathing accessories supplied with this product, please ensure these items have been adjusted accordingly by a competent and trained person authorised to do so. Failure to do so may minimise support, comfort and could result in injury. please refer to the specific user guide instructions. If you require further information please contact Care & Independence.



### 2.2 EQUIPMENT INSPECTION:

Care & Independence recommend pre-use equipment checks by a competent person to ensure the equipment is free from defects.



### 2.3 EQUIPMENT SERVICING:

An annual servicing of the equipment is recommended.

## 3. DAMAGED OR FAULTY PRODUCT



Care & Independence have a strict *Returns & Repair Procedure* to ensure the safety of all involved.

Please **do not** send products back without completing the Return/Repair form.

## 4. PRODUCT CARE



### 4.1 GENERAL CARE:

Discolouration to some materials or fading labels may occur as a result of use over time.

NOTE: It is recommended that the product label remain legible throughout the product's working lifetime but is not currently a statutory requirement.



### 4.2 CLEANING THE EQUIPMENT:

- After use, the product should be cleaned with particular attention being paid to the equipment bed base area.
- It is recommended to use clean warm water followed by an anti-bacterial solution. In the event of a soiled product, a non-abrasive cleaner is recommended in place of the warm water.
- **Do not use bleach or agents containing bleach.**
- Towel dry after use. Any materials should be disposable and dealt with in an environmentally-friendly manner.
- Keep moving parts free from limescale, soap, hairs and fibres.



### 4.3 DECONTAMINATION:

To avoid cross-contamination in an institutional setting, a three-tiered cleaning approach is recommended: warm, non-abrasive cleaner and anti-bacterial solution.

Please be aware of any infection control policies that may in force locally or appropriate to multi-user scenarios.



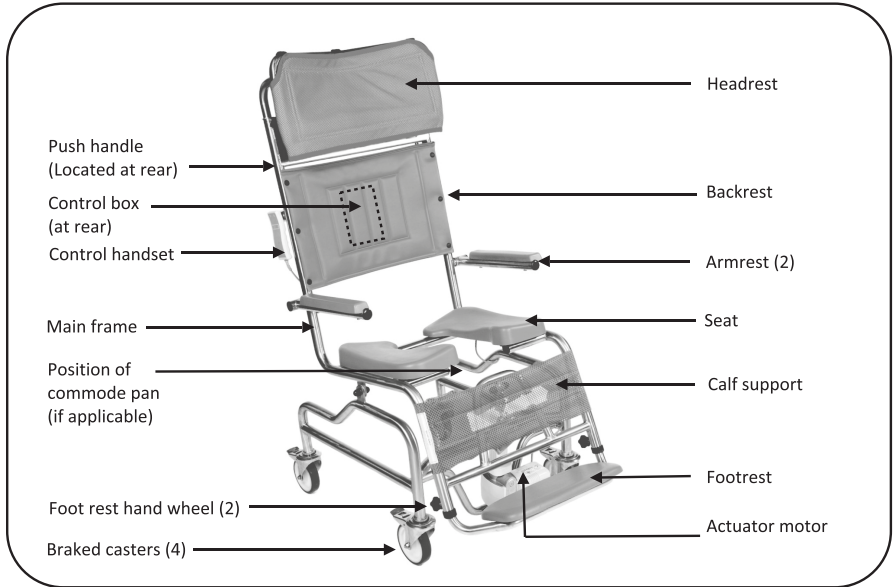
### FURTHER INFORMATION:

Available to download from our website

- Returns & Repair Procedure

## 5. GETTING TO KNOW YOUR PRODUCT

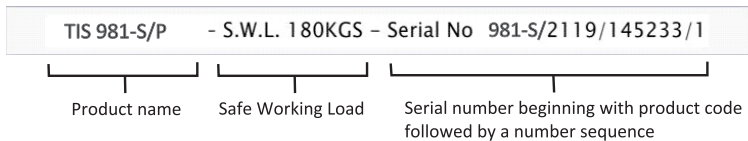
### 5.1 THE TILT-IN-SPACE SHOWER CHAIR (BARIATRIC MODEL)



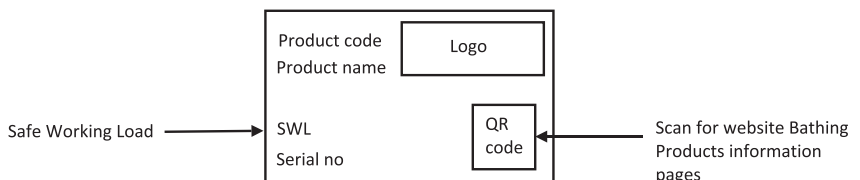
### 5.2 PRODUCT LABELS EXPLAINED

There are two types of labels associated with each bathing product.

i) Located on the main frame (*example label*):



i) Located on the fabric headrest only (*example label*):



## 6. OPERATIONAL INSTRUCTIONS

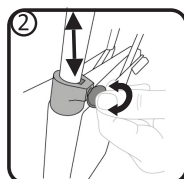
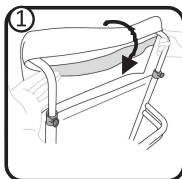
Before starting, check that the bathing equipment is in safe and clean condition and is the appropriate size and model for the person to be serviced. There are a variety of ways to use and adjust this equipment, so please read carefully.

### 6.1. HEADREST

The headrest should be adjusted to suit the service user.

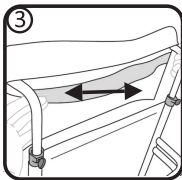
#### 6.1.1 Headrest Fitting

- i. Slide headrest fabric over the main frame
- ii. Secure with hook and loop fastening



#### 6.1.2 Height Adjustment

- i. Release the handwheels at the top of the backrest and insert the headrest down-tubes.
- ii. Select the desired headrest height by sliding the headrest assembly up or down.
- iii. Secure the handwheels.



#### 6.1.3 Headrest Tension

Tension can be easily applied or released by either tightening or loosening the hook and loop attachment as required.

### 6.2 BACKREST

The padded vinyl backrest is permanently fixed to the main frame of the chair. It is not adjustable. It may be wiped clean with a damp cloth and a mild cleaning solution.

### 6.3 ARMRESTS

Armrests can be raised to allow for easier transfer and for access. The armrests must not be used to help manoeuvre the chair; a push handle is located on the rear of the main frame for this purpose.

- i. To raise the arm: lift upwards.
- ii. To lower the arm: fold downwards.





## 6.4 SEATING

Seats are fitted at factory. Please contact Care & Independence for assistance with replacement seats.

- A choice of four\* seating options is available, each secured with four bolts to the seat underside.
  - (1) Full [solid] - (2) Flexi [2 split halves] - (3) Aperture [hole] - (4) Gap [Horseshoe-shaped] -can be front or rear facing

### 6.4.1 Removal and Fitting (Flexi seat variant only)

- The rubber-moulded Flexi seat variant prevents water ingress, minimising cross-contamination risks.
- It is secured by four bolts to the underside of each half.
- When removing the seat for maintenance or cleaning it is recommended to note the dimensions of the aperture and gap at the front of the chair to ensure it is re-fitted in the correct position.
- The seat is adjustable in width to allow improved posture and comfort.
- Ensure that the seat is set correctly for the Service User.
- Ensure that the gap in the Flexi seat will not allow any part of the Service User's body to become trapped.

#### i. To remove the seat:

- a) Undo the bolts.
- b) Lift off seat.

#### ii. To fit the seat:

- a) Line up the seat holes with the corresponding frame holes.
- b) Insert screws and tighten securely

#### iii. To adjust the seat:

- a) Remove commode pan (if fitted).
- b) Gently loosen screws, allowing seat to move.
- c) Position seat as required.
- d) Tighten screws.

## 6.5 CALF SUPPORT

The vinyl calf pad is permanently secured to the main frame. It can not be adjusted. It may be wiped clean with a damp cloth and a mild cleaning solution.

## 6.6 FOOTREST

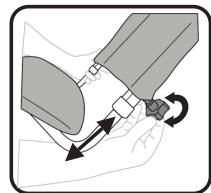
- **DO NOT STAND ON THE FOOTREST as this may result in the chair tipping.**
- The footrest has been designed to be removed if not required.

### 6.6.1 Fitting

- i. Slide the footrest into the corresponding frame poles to the required position to suit user.
- ii. Secure by tightening the handwheel pin.

### 6.6.2 Removal

- i. Undo handwheel pin
- ii. Slide footrest out.

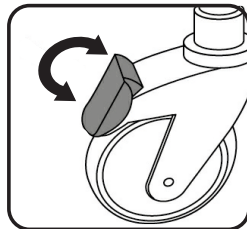


## 6.7 BRAKES

All Tilt-In-Space chair and cradle models are fitted with braked castors (identified by a red pedal). This is a foot-operated brake.

### Operation:

- i. Press down with the tip of the foot onto the front of the pedal to operate the brake.
- ii. Push back on the pedal to release.

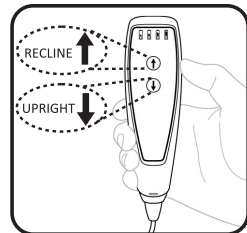


## 6.8 Tilt Recline Operation

- The tilting mechanism is handset operated via a rechargeable battery powered motor.
- The chair can be safely operated whilst the service user is in-situ.

### 6.8.1 Handset Control

- The handset is designed to be ergonomic in the hand.
- There is a convenient hook on the back to attach to the chair when not in use.
- The motor automatically stops when the handset button is released or when the maximum travel distance has been reached in either direction.



### To operate the handset

- i) Select the appropriate button and hold down until the desired position is reached.

### 6.8.2 The Battery & Charging Unit

- The charger is designed for use solely with the battery pack fitted. It is not possible to overcharge the batteries with the charger supplied.
- We recommend an overnight charging routine to ensure the equipment is in a permanent state of user readiness.
- The actuator has a service life of 10,000 cycles. Please contact Care & Independence with the model, serial number, for any service or performance-related enquiries.

### To charge the battery

- i) A plastic cap protects the socket on the bottom of the control box. To remove cap, pull down on the attached tab.
- ii) Plug the charger lead supplied into the socket outlet.
- iii) Remove charger lead and replace socket cap once charging is concluded.

NOTE: An emergency stop button is located on the control box.

## 6.9 Optional Accessories

6.9.1 The commode pan is usually factory fitted. It is mounted on a bracket under the seat. It can be removed from the rear of the chair by simply sliding along the rack rail.

### 6.9.2 Lapstrap & Harnesses

These are separate to the chair. They should be fitted around the user and secured by the buckles or attachments accordingly. Please refer to the individual product User Guide for full instructions.

*This page has been left blank for notes*

# Bathing Range

## USER GUIDE

Care   
Independence  
www.careandindependence.com



Care & Independence Ltd,  
Unit 3, Telford Business Centre,  
Telford Road, Bicester, OX26 4LD

033 012 80808

sales@careandindependence.com

Monday - Friday 08.30 -17.00



SCAN QR CODE FOR;

- Product information
- User Guide



Free product training is also offered.  
Please contact us for further  
information.



- Expert advice
- Full support



- Faded label replacement
- Equipment repair

*If a third party supplier has provided the product,  
you may like to write their contact details here:*



©2024 Care & Independence Ltd All Rights Reserved.  
Contents (including images) herewithin are intended as a guide  
and contents are infallible to error although every care and  
attention has been taken to ensure that the instructions  
represented here are honest and true. Care & Independence Ltd  
reserve the right to alter, modify, add or delete any of the contents  
and is under no obligation to notify the user of the amendments  
except where harm or safety issues could occur as a result. All  
data is correct at time of publication.